

# Visit COVILHÃ

Covilhã is one of the most important cities of Portugal's prettiest regions - Serra da Estrela - and one of its main gateways.

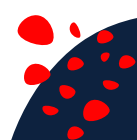
Located in the district of Castelo Branco, visiting Covilhã can be a great excuse to get to know the Beira Baixa region in Portugal and also to take advantage of the many other incredible places that are located nearby.

Covilhã is a relatively small town, but there are plenty of reasons to visit it. Firstly, it's a destination you can visit at any time of year: in winter to look for snow in the highlands or during the summer to enjoy some of the beautiful river beaches nearby.



Covilhã currently has one of the most important university centers in the interior of the country - University of Beira Interior- which means that, despite being located in the interior of Portugal, the city has a young and dynamic spirit.

Most points of interest in Covilhã are located relatively close together. Therefore, it's possible to visit the city mostly on foot.



# *What to visit in Covilhã*

## **Praça do Município (Town Square)**

You can start your visit in Praça do Município, home to some of the city's best-known buildings, such as the Town Hall, the Misericórdia da Covilhã Church and the Covilhã Municipal Theatre.



Don't forget to admire the **Statue of Pêro da Covilhã**, located in front of the town hall. This man is one of the most illustrious figures born in Covilhã, as he was sent by King John II of Portugal to India and Ethiopia in the 15th century to learn more about the spice trade routes.

At the back of Covilhã's Town Hall, don't forget to also have a look at the **Janela Manuelina** (Manueline Window) and the **Cistern**.



## Igreja de Santa Maria Maior (Santa Maria Maior Church)

Following the streets behind the city hall, you will discover one of Covilhã's main churches. The blue and white tiles lining its exterior are well worth looking at, as they are beautiful and depict the life of the Virgin Mary.



The church was probably built in the 16th century and has since undergone some alterations, making it a Baroque-style church. It's a place not to be missed in Covilhã!

## Portas do Sol Viewpoint

Follow the deserted streets and alleys until you reach the Portas do Sol viewpoint. From here, you'll find one of the best views of the city and its surrounding landscapes, such as Serra da Gardunha. (Gardunha Mountain)



## Igreja de Nossa Senhora da Conceição (Nossa Senhora da Conceição Church)

The city's public garden area is one of the most pleasant in the city and take the opportunity to admire the Church of Nossa Senhora da Conceição. This church belongs to the former Convent of São Francisco, built in the 16th century.



## Museum of Sacred Art

The former residence of Maria José Alçada and resulting from a partnership between the Covilhã City Council and the Covilhã Archpriesthood, the Museum of Sacred Art can be a good addition to this itinerary if you enjoy sacred art.



Inside the museum, you can see collections of paintings, sculptures and jewelry, among others.

Covilhã's Museum of Sacred Art is free to enter and includes a guided tour (although you have to book it beforehand). **It is open from Tuesday to Sunday from 10 am to 6 pm.**

## Jardim Público (Public Garden)

The area around the Museum of Sacred Art and Nossa Senhora da Conceição Church is one of the city's main green spaces and one of the most pleasant – Jardim Público

If the weather is good, this is the ideal place to rest for a while and have a drink, for example. You can also enjoy unforgettable views of the city, the Zêzere River valley and Serra da Estrela.



## Ribeira da Carpinteira Bridge

It is also from Jardim Público that you have the best opportunities to photograph the Ribeira da Carpinteira Bridge. There is a free elevator that takes you down to this pedestrian bridge.



## Street Art Murals

One thing that proves how modern Covilhã become in recent years is all the street art murals that we come across as we walk the city streets. These murals are the result of the urban art festival – WOOL (Festival de Arte Urbana da Covilhã).



Featuring artists of various nationalities, one of the main aims of this project, which began in 2011, was to rehabilitate the city's historic center and, consequently, boost the city's most run-down areas. The truth is that the streets have become very colorful, and this is now an attraction that brings more tourists to the city.



This Urban Art Route it's a real open-air museum!  
The Wool Map is [here](#)



## NEW HAND LAB - The former wool factory that became a creative laboratory

New Hand Lab was born in 2013 and is located at the Júlio Afonso Wool Factory. Today, with the status of a Cultural Association, it promotes creativity, innovation and entrepreneurship, through the realization of ideas, products and initiatives. Within it, the space includes authors and artists from different areas, such as fashion and textile design, multimedia arts, painting, sculpture, among others.



Visitors will have the opportunity to discover the reality of textile factories in their heyday. Throughout the visit is possible to observe machines, offices, laboratories and much of Júlio Afonso's technical heritage. Furthermore, works by resident authors are distributed throughout the building. The visit culminates in the store, where it is possible to discover and purchase original pieces. An immersive visit that promises to leave anyone enchanted. In the past, their art was wool; now, New Hand Lab preserves stories and weaves dreams.



<https://www.youtube.com/watch?v=HND09ZkVtmY>



**New Hand Lab can be visited, from Monday to Friday, between 2.30 pm to 5.30 pm.** The price is 10€ per person.

Contacts:

Rua Mateus Fernandes - Travessa do Ranito, 6200-521  
Covilhã

☎ 00351 962 697 493

comunicacao.newhandlab@gmail.com

## Museu de Lanifícios (Wool Museum)

Covilhã was one of Portugal's main wool producers and, although the industry has since declined in the region, it remains part of the city's history.

There were once hundreds of companies that transformed wool into fabrics, but the arrival of cheaper foreign fabrics eventually led to the devaluation of this economic activity in the region.



However, given the importance of wool fabrics in the region, the Covilhã Wool Museum is one of the places that best tells this particular story of Covilhã. The Wool Museum, also known as MUSLAN, constitutes an Interdepartmental Centre of the University of Beira Interior. The Museum is situated in different locations, namely Real Fábrica de Panos and Real Fábrica Veiga.

The different locations of the Covilhã Wool Museum have different opening hours. Prices also vary, but you can visit Real Fábrica Veiga and Real Fábrica de Panos for 6€. You can find all the information on the official website to better plan your visit.

## Jardim do Lago (Lake Garden)



If you have some time to spare and like parks, you can visit Jardim do Lago. It's a bit further away from the historic center of Covilhã, but it's a large and pleasant space. In summer, this is a favorite spot for locals to cool off in Piscina da Praia da Covilhã (Beach pool).

# What to visit near Covilhã

Given Covilhã's strategic location next to Serra da Estrela Natural Park, there is no shortage of beautiful places to visit in the vicinity of this Portuguese city.

There are some places relatively close to Covilhã that you can also include in your itinerary.

If you want to go to Serra da Estrela, there is a bus that connects Covilhã - Penhas da Saúde - Serra da Estrela Tower. It's called **Serra Shuttle**. You can check the timetable [here](#). You can take an Uber, as well.

## Varanda dos Carqueijais Viewpoint

What is probably one of the most famous viewpoints in Serra da Estrela is merely a 10-minute drive (5 km) from the center of Covilhã. The viewpoint has enviable views over Serra da Estrela and a metal structure that, depending on the perspective, is very photogenic.



## Torre

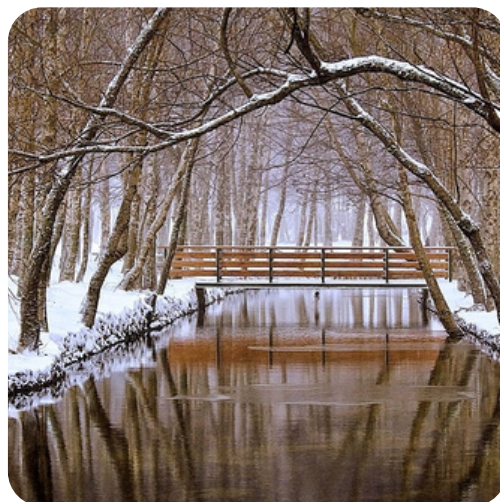


One of the main landmarks in Serra da Estrela is Torre – the highest point in mainland Portugal. And it is just a 30-minute drive (20 km) from Covilhã. At an altitude of almost 2,000 meters, this is where almost all tourists head in search of snow when visiting Serra da Estrela. What's more, it's the only place in Portugal with a natural ski resort. It's especially beautiful if it's snowing.



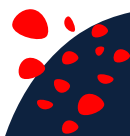
## Covão d'Ametade

If you like places that look like they're straight out of a fairy tale, then you can't miss Covão d'Ametade. It's one of the most beautiful places in the whole of Serra da Estrela and it's beautiful in any season, whether it's snowing or not! This is one of those places that's well worth it!



## Unhais da Serra River Beach

Also just a 30-minute drive from Covilhã is the beautiful and idyllic river beach of Unhais da Serra. In addition to its beauty, this beach has great facilities. An excellent option for cooling off on hot days!



## Belmonte

Belmonte is an excellent option to visit on the outskirts of Covilhã. It's one of Portugal's Historic Villages that is well worth a visit, especially for its old Jewish quarter and the Castle.

Visiting Belmonte is stepping on the soil that saw the birth of Pedro Álvares Cabral, the Portuguese navigator who discovered Brazil.



## *Restaurants in Covilhã*

The city of Covilhã offers its visitors truly unique gastronomic delights, deeply rooted in the historical past of the former factory city.

These are just a few suggestions, among the varied list of restaurants that Covilhã offers.



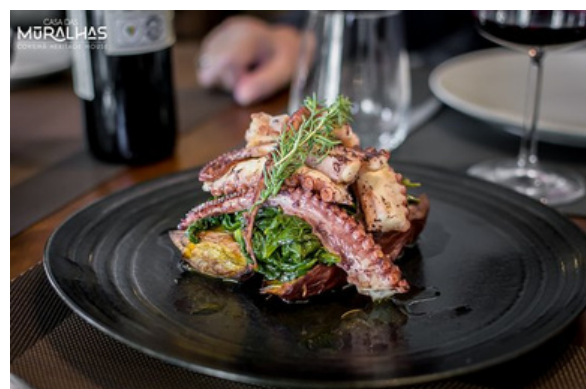
## MONTIEL

Montiel is a simple and welcoming restaurant, located in Praça do Município. Here you can taste typical dishes from the Beira Baixa region.



## CASA DAS MURALHAS

Casa das Muralhas is a boutique guesthouse, housed in a century-old building, which offers a stunning view over the Serra da Estrela, the city of Covilhã and the remains of the city's old castle wall.



## TABERNA A LARANJINHA

Located in the heart of the historic center of the welcoming city of Covilhã, A Laranjinha is a cozy tavern where you can taste an endless list of the most authentic snacks, in homage to the gastronomic richness of the Serra da Estrela region.



## PAÇO 100 PRESSA

Situated in the heart of the historic center of Covilhã, Paço 100 Pressa is a charming restaurant, as well as a boutique bed & breakfast, housed in a historic building dating back to 1911. The fine dining restaurant serves specialties, based on the freshest local products.



## O LAGO

Located in the heart of Jardim do Lago (lower part of the city), O Lago is a restaurant with a panoramic view over the city of Covilhã, serving delicious regional dishes.



# Where to stay in Covilhã

Note: All values indicated, per hotel, were consulted on Booking.com, and may be subject to small fluctuations during the year (prices 2024).

In Covilhã and in Penhas da Saúde (a mountain village in the heart of Serra da Estrela) there are several hotels where you can stay.

## In Covilhã (altitudes ranging from 450 to 800 meters):

**Sport Hotel Gym + SPA** – 10% discount on list price.

Price: 57€/night/2 person room or 36€/night/1 person room

Av. Frei Heitor Pinto

6201 - 909 Covilhã, Portugal

GPS coordinates: 40.28430570632134, -7.5054882311802045

<https://www.booking.com/hotel/pt/covilha-parque.pt-pt.html>

**TRYP Covilhã Dona Maria Hotel** – Price: 80€/night/2 person room or 69€/night/1 person room

Avenida da Universidade,

6200-374 Covilhã, Portugal,

GPS coordinates: 40.269726448681105, -7.50531300234566

<https://www.trypdonamaria.com/pt/Menu/Home.aspx>

**Santa Eufémia Covilhã Hotel** – Price: 55€/night/2 person room or 44€/night/1 person room

Alameda Pêro da Covilhã,

6200-507 Covilhã, Portugal

GPS coordinates: 40.27373550852973, -7.503157030659284

<https://www.booking.com/hotel/pt/santa-eufemia.pt-pt.html>

**Puralã - Wool Valley Hotel & SPA** – 10% discount on list price

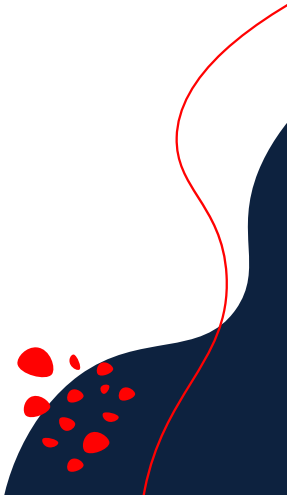
Price: 73€/night/2 person room or 48€/night/1 person room

Acesso à Variante 6200,

6200-507 Covilhã, Portugal

GPS coordinates: 40.26758385763922, -7.498071587005698

<https://www.hotelpurala.pt/>



**Hotel Solneve** – Price: 73€/night/2 person room or 58€/night/1 person room

Rua Visconde de Coriscada, 126,

6200-077 Covilhã, Portugal

GPS coordinates: 40.280993676479326, -7.503761544675377

<https://www.hotelsolneve.pt/>

**Hotel Covilhã Jardim** – Price: 72€/night/2 person room or 72 €/night/1 person room

Rua São Salvador, n 1,

6200-196 Covilhã, Portugal

GPS coordinates: 40.28326241722004, -7.503838473510277

<https://hotelcovilhajardim.com/>

**Paço 100 Pressa** – Price: 55€/night/2 person room or 43€/night/1 person room

Travessa de São Tiago nº 3, 6200-031 Covilhã, Portugal

GPS coordinates: 40.27989419414426, -7.503346129335431

<https://www.paco100pressa.pt/paco>

**Pena D'Água Boutique Hotel & Villas** – Price: 94€/night/2 person room or 79€/night/1 person room (corporate price)

Rua de São Francisco Álvares nº 25,

6200-051 Covilhã, Portugal

GPS coordinates: 40.28325814017872, -7.505982329335325

<https://penadagua.com/>

**Casa das Muralhas** – Price: 115€/night/2 person room or 110€/night/1 person room

Get a discount, booking with the code UNITA5 directly on this link:

<https://booking.roomraccoon.pt/casa-das-muralhas/pt/>

Rua Pedro Álvares Cabral nº5,

6200-162 Covilhã, Portugal

GPS coordinates: 40.28118487601604, -7.507056088850278

<https://www.casasmuralhas.pt/>

## In Penhas da Saúde:

**Pousada da Serra da Estrela** (1200m altitude, at 6,3 km from Covilhã, an 11 min driving) – Price: 120€/night/2 person room or 116€/night/1 person room

Estrada Nacional 339 - Penhas da Saúde,

6200-111 Covilhã, Portugal

GPS coordinates: 40.29205098381177, -7.533358486480609

<https://www.pousadas.pt/en/hotel/pousada-serra-estrela>

**Luna Hotel Serra da Estrela** (1500m altitude, at 10 km from Covilhã, a 14 min driving) – Price: 60€/night/2 person room or 51€/night/1 person room

Penhas da Saúde,

6200-073 Covilhã, Portugal

GPS coordinates: 40.3075672570586, -7.54868729997332

<https://www.lunahoteis.com/luna-serra/o-hotel.html>

**Lam Hotel dos Carqueijais** (1100m altitude, at 5,3 km from Covilhã, an 8 min driving) – Price: 75€/night/2 person room or 75€/night/1 person room

EN 339 Km 5 - Serra da Estrela,

6200-073 Covilhã, Portugal

GPS coordinates: 40.29015797010857, -7.529059565043316

<http://flagworldhotels.com/index.php>

**In Unhais da Serra**, 20km from Covilhã (26 min driving), known for the therapeutic characteristics of its termal waters:

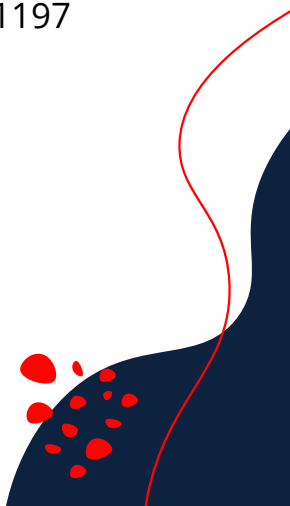
**H2otel Congress & Medical SPA** (750m altitude) – Price: 210€/night/2 person room or 170€/night/1 person room

Av. Das Termas,

6215 - 604 Unhais da Serra, Portugal

GPS coordinates: 40.26653779809242, -7.623974286481197

<https://www.h2otel.pt/>

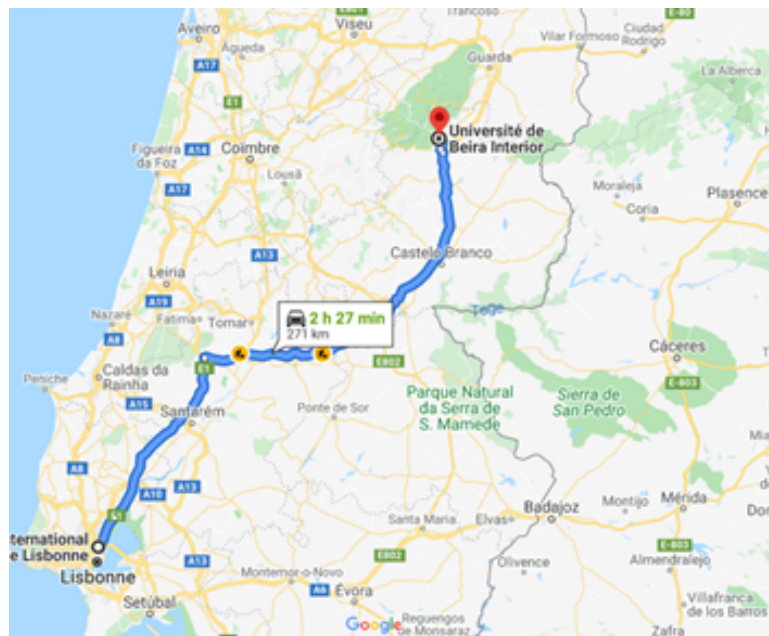


# Access to Covilhã

Information for highway electronic payment tool: <https://gotoportugal.eu/en/toll-roads-in-portugal/>

## From Lisboa

**By car:** From Lisboa Airport (270 kms, 2h30 by car through the highways A1 (Exit 7 Torres Novas/Abrantes) and A23 (Exit 30 Covilhã Sul/Hospital).



For who is travelling by plane to Lisbon and wants to come to **Covilhã by bus:**

- Airport -> Metro: **Red Line** (Aeroporto-Gare do Oriente) -> Gare do Oriente

Find here actualized timetables and prices:

<https://rede-expressos.pt/en/timetables> ;

<https://www.flixbus.co.uk/>

For who is travelling by plane to Lisbon and wants to come to **Covilhã by train:**

- Airport -> Metro: **Red Line** (Aeroporto-Gare do Oriente) -> Gare do Oriente

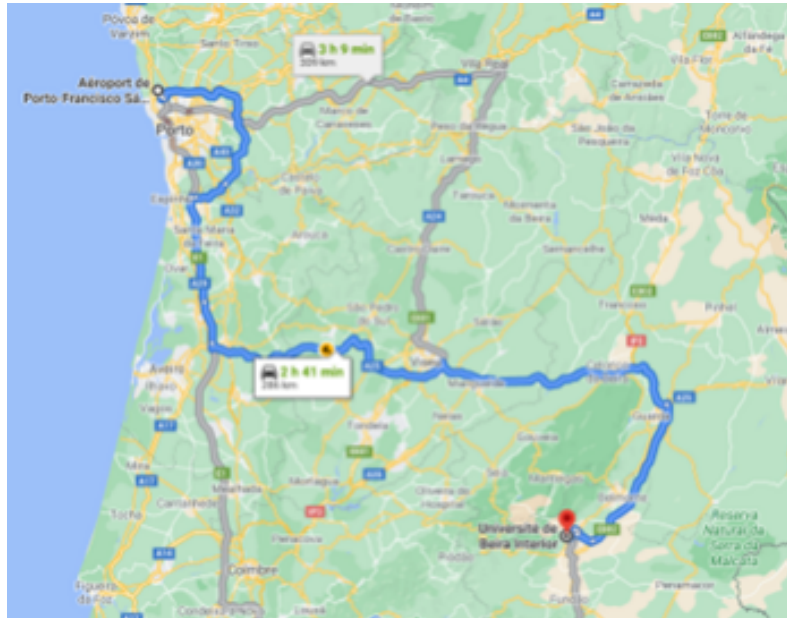
Find here actualized timetables and prices:

<https://www.cp.pt/passageiros/en>



## From Porto

**By car:** From Porto Airport (262 kms, 2h40 by car through the highways A1 (Exit 16 Viseu/Espanha), A25 (Exit 30 Guarda Sul/Covilhã/Portalegre) and A23 (Exit 31 Covilhã Norte/Hospital).



For who is travelling by plane to Porto and wants to come to **Covilhã by train:**

- Airport -> Metro: **Linha E** (Aeroporto-Estádio do Dragão) -> Campanhã

Find here actualized timetables and prices:

<https://www.cp.pt/passageiros/en>

For who is travelling by plane to Porto and wants to come to **Covilhã by bus:**

- Airport -> Metro: **Linha E** (Aeroporto-Estádio do Dragão) -> Campanhã

Find here actualized timetables and prices:

<https://rede-expressos.pt/en/timetables>

## From Madrid

**By car:** From Madrid Airport (430 kms, 4h10 by car through Salamanca, A25 (Exit 30 Guarda Sul/Covilhã/Portalegre) and A23 (Exit 31 Covilhã Norte/Hospital)